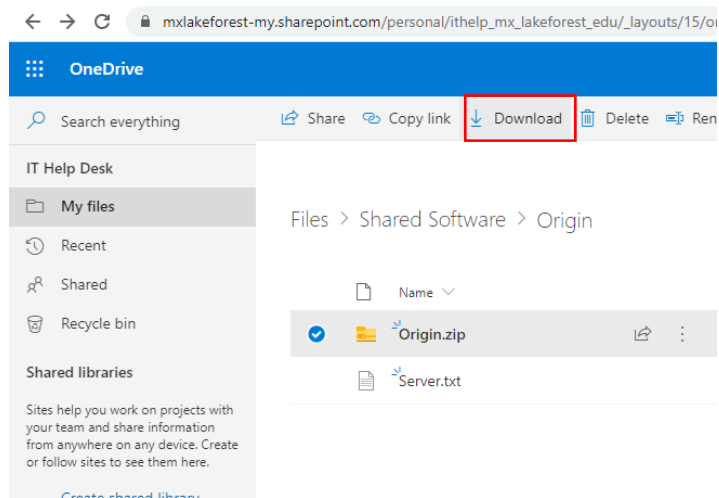


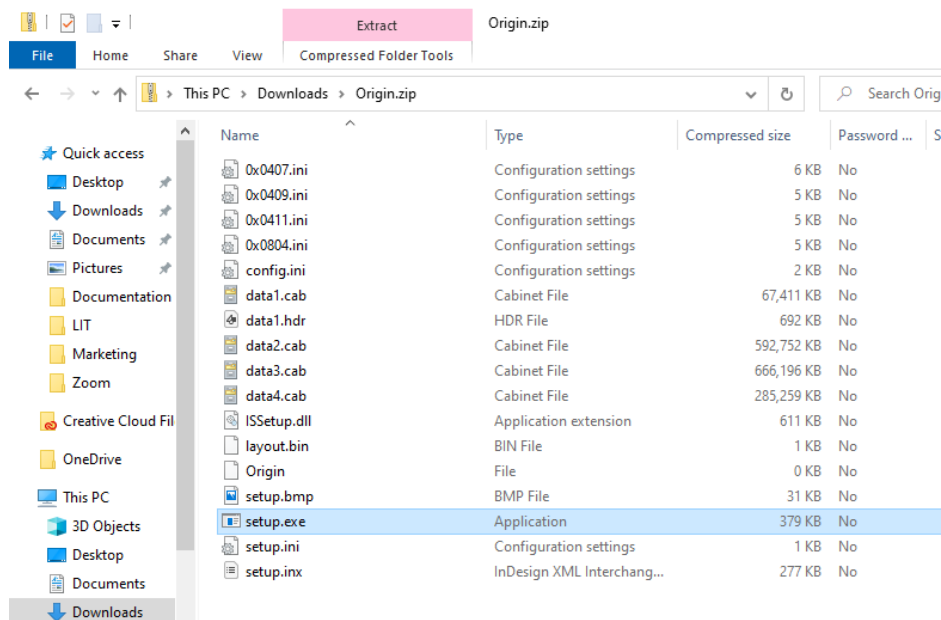
Origin Installation Directions for Windows

1. Before you can run Origin, you need to install the [OpenVPN client](#). Directions to install OpenVPN on your computer or mobile device is available [here](#). Once it is installed, start the OpenVPN client and login so you can complete the Origin installation successfully.
2. After you have connected through OpenVPN, login to the [online Shared Software](#) folder with your Lake Forest College email account (including the “mx”, i.e., myusername@mx.lakeforest.edu).
3. Navigate to the **Origin** folder, and click to open it. Click the circle checkbox to the left of the **Origin.zip** file to select it, and then click the **Download** option at the top of the browser window beneath the blue banner.

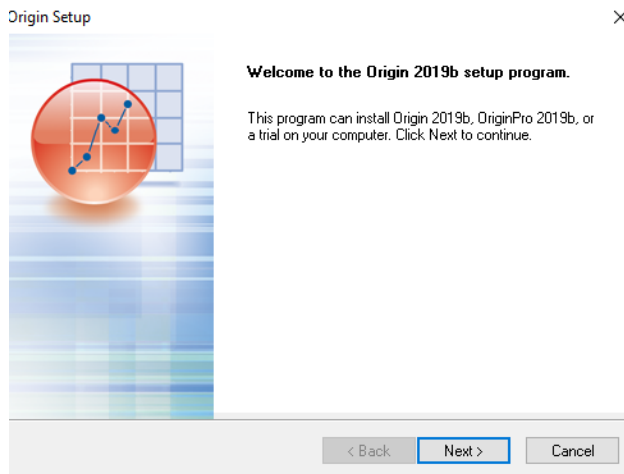
Note: Depending on your network speed, it may take a while for the file to download.



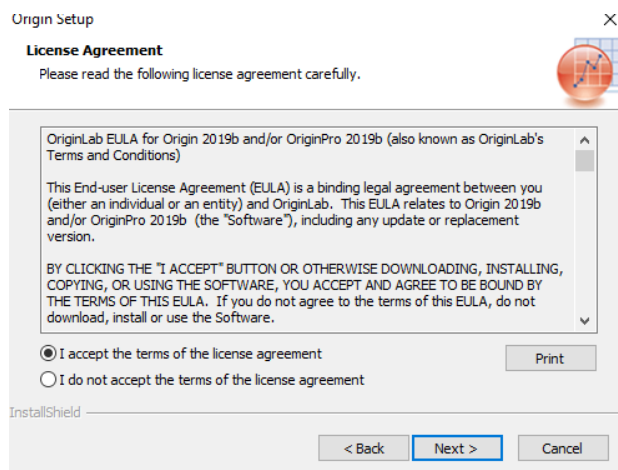
4. Once the file has been downloaded, navigate to the **Downloads** folder on your local hard drive. Find the **Origin.zip** file and double-click to open it and double-click on the **setup.exe** file to begin the installation.



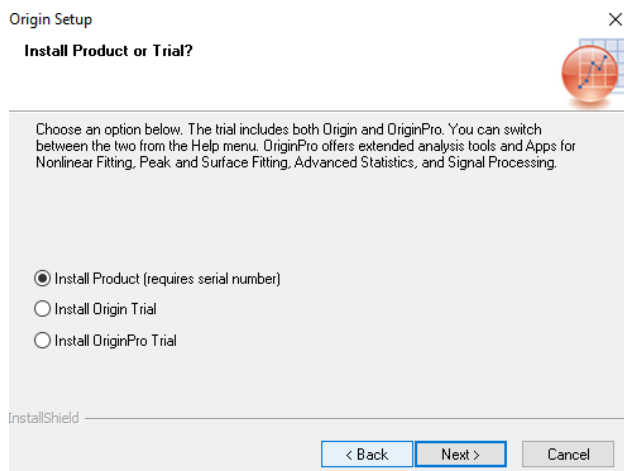
5. If prompted to allow the program to install on your computer, click **Yes**. There may be a second prompt asking you to confirm allowing the program to install, and press **Yes** on the second one as well.
6. Click **Next** in the first screen of the setup.



7. Click the radio button to **I accept the terms of the license agreement**, and then click **Next**.



8. Click the radio button to select **Install Product (requires serial number)**, and then click **Next**.



9. In the **Customer Information** window, enter:
- User Name: Enter your name
 - Company Name: Enter **Lake Forest College**
 - Serial Number: Enter **GF3S4-3078-7903976**

Once you have entered the required information, click **Next**.

Origin Setup

Customer Information

Please enter your information.

Please enter your name, the name of the company for which you work and the product serial number.

User Name:
User

Company Name:
Lake Forest College

Serial Number (enter full Serial Number using format xxxx-xxxx-xxxxxxx):
GF3S4-3078-7903976

InstallShield

< Back Next > Cancel

10. Click **Yes** on the **Registration Confirmation** screen.

Registration Confirmation

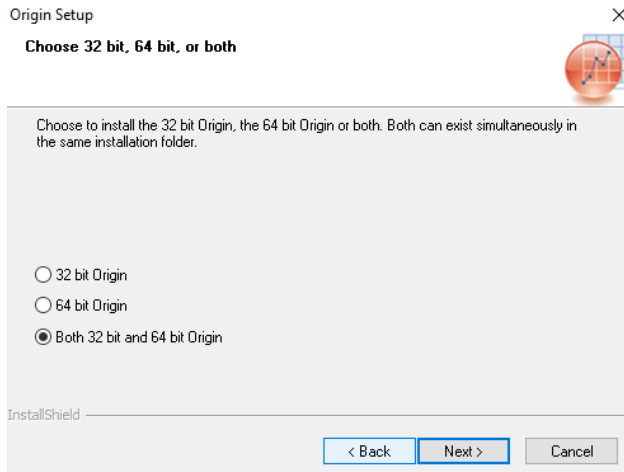
You have provided the following registration information:

Name:	User
Company:	Lake Forest College
Serial Number:	GF3S4-3078-7903976

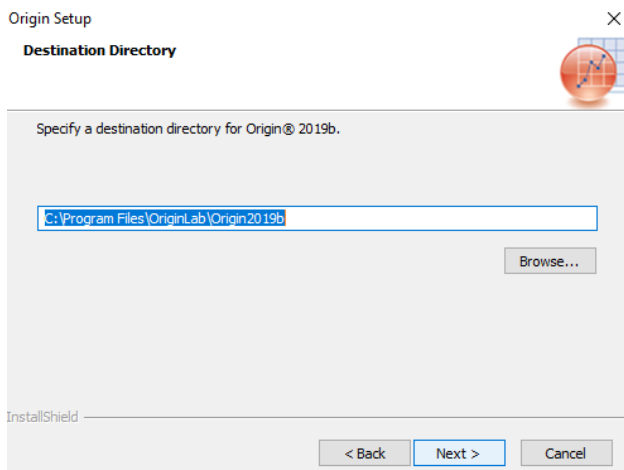
Is this registration information correct?

Yes No

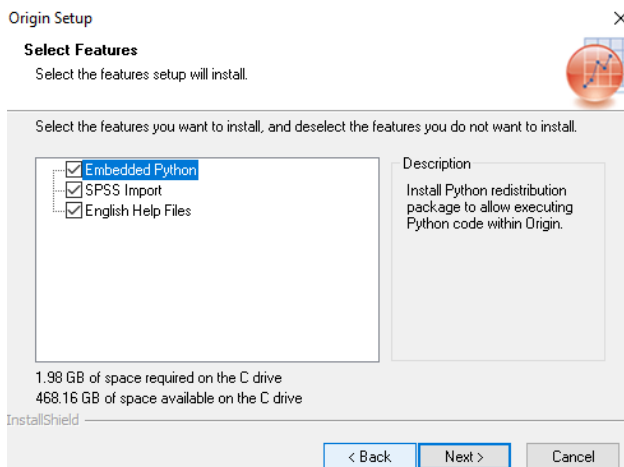
11. Select the operating system version of Origin you would like to use. If you are unsure, select both and click the **Next** button.



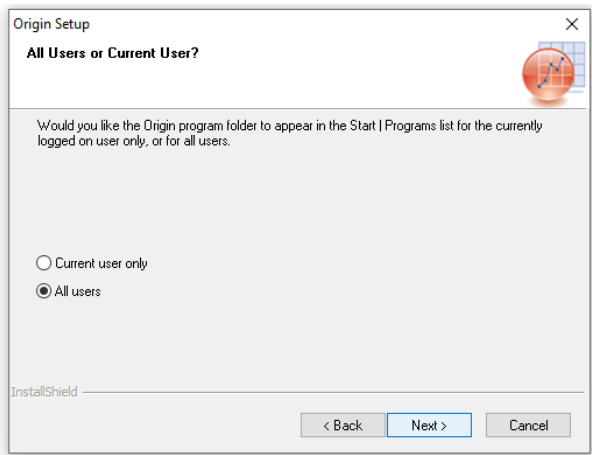
12. Leave the default **Destination Directory** installation path, and click **Next**.



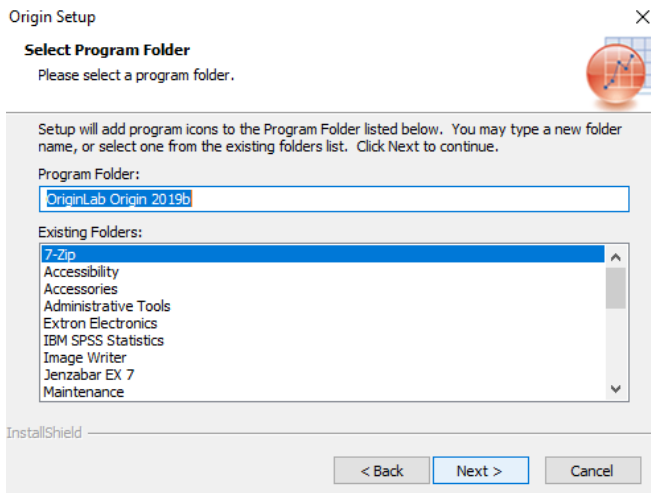
13. If you plan to use SPSS, check the SPSS Import box. Otherwise, leave the Python and Help checkboxes checked, and click **Next**.



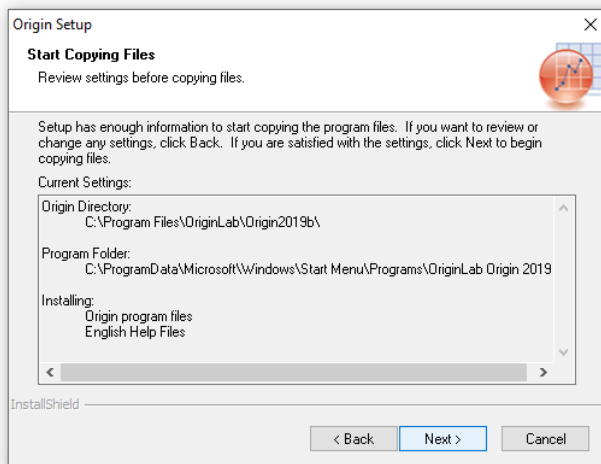
14. Leave the setting for **All users** selected, and click **Next**.



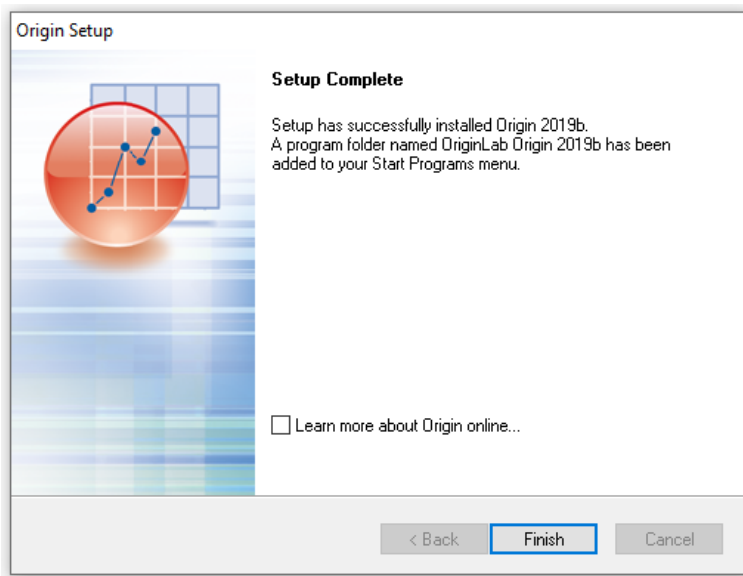
15. Leave the default **Program Folder:** name, and click **Next**.



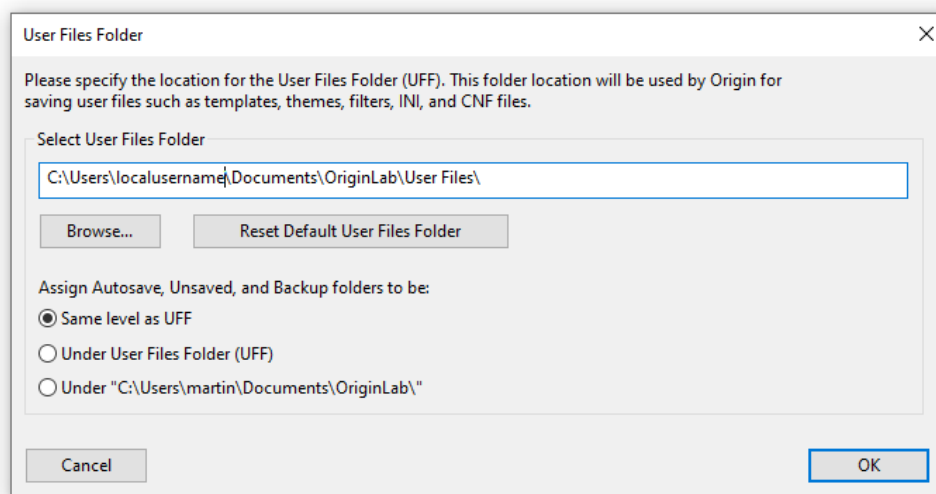
16. Click **Next** to start the install.



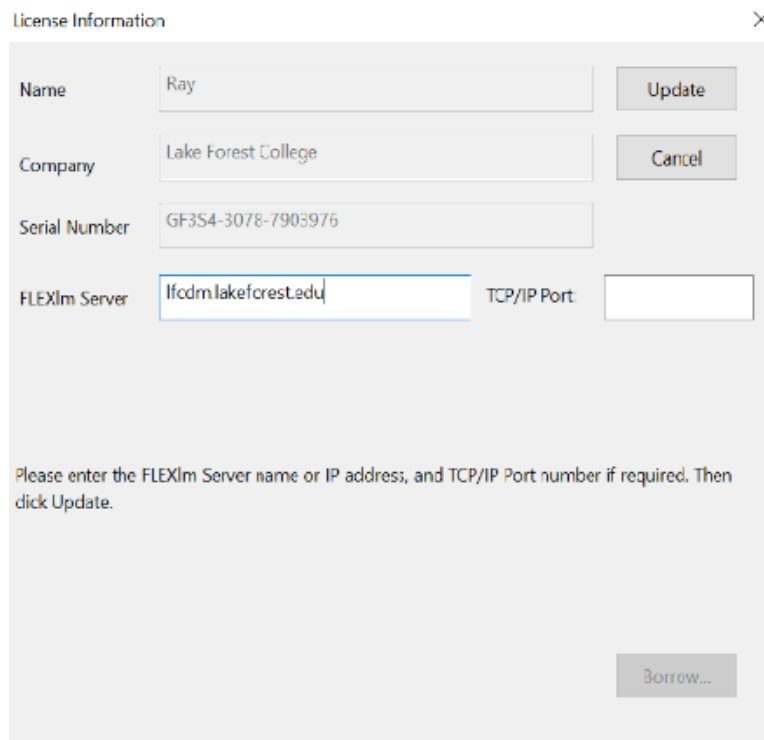
17. When the installation completes, click **Finish**.



18. Leave the default path for the **User Files Folder**, and click **OK**.



19. Enter **lfcdm.lakeforest.edu** in the **FLEXlm Server** text box and leave the TCP/IP Port box blank, and then click the **Update** button in the upper right corner of the **License Information** window.



License Information

Name: Ray [Update]

Company: Lake Forest College [Cancel]

Serial Number: GF354-3078-7903976

FLEXlm Server: lfcdm.lakeforest.edu TCP/IP Port: []

Please enter the FLEXlm Server name or IP address, and TCP/IP Port number if required. Then click Update.

[Borrow...]

20. The Origin icon will be on your Start Menu, and you can now run Origin any time that you are connected to the Lake Forest College network through [OpenVPN](#).

Note: You must connect through [OpenVPN](#) before launching SPSS for it to have access to the licensing server