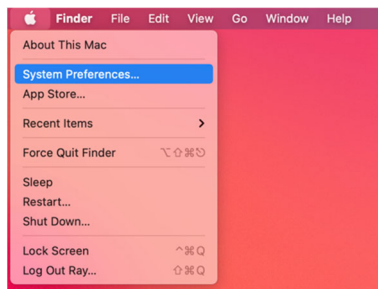


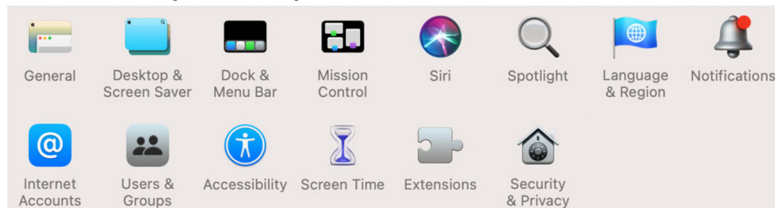
## SPSS 26 Installation Directions for Mac

1. OpenVPN is required to use SPSS. First, install the [OpenVPN client](#). Directions to install OpenVPN on your computer or mobile device are available [here](#). Once OpenVPN is installed, launch the OpenVPN Connect and log in.
2. Click on this link to log in to the [Shared Software](#) folder. Enter your Lake Forest College email account (i.e., myusername@lakeforest.edu).
3. Navigate to the **SPSS** folder, and click to open it. Click the file named **SS\_CLIENT\_26.0\_MAC\_OS\_SILENT\_M.dmg** and then the **Download** button.  
**Note:** Depending on your network speed, it may take a while for the file to download.
4. Once the file has been downloaded, navigate to the **Downloads** folder on your computer. Find the **SS\_CLIENT\_26.0\_MAC\_OS\_SILENT\_M.dmg** file and double-click on it to begin the installation.
5. If prompted to allow the program to install on your computer, click **Yes**. There may be a second prompt asking you to confirm allowing the program to install, and press **Yes** on the second one as well.
6. When the installer launches, click **Next** through the first two screens.

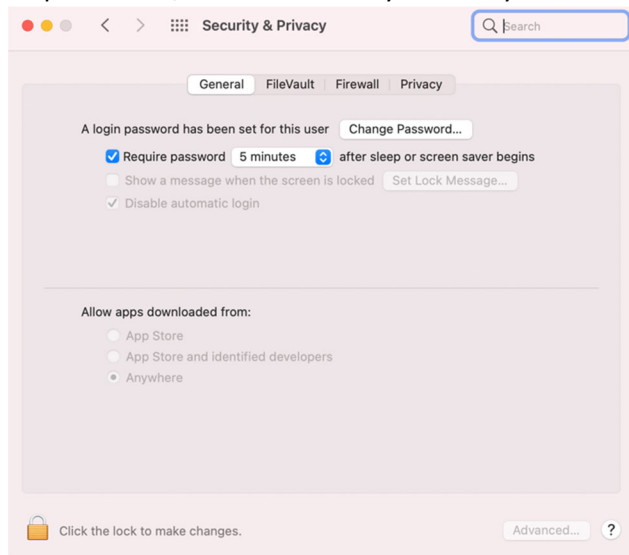
**Gatekeeper needs to be turned off** before installing SPSS. To see if it is turned on, open **System Preferences**.



4. Select **Security & Privacy**.



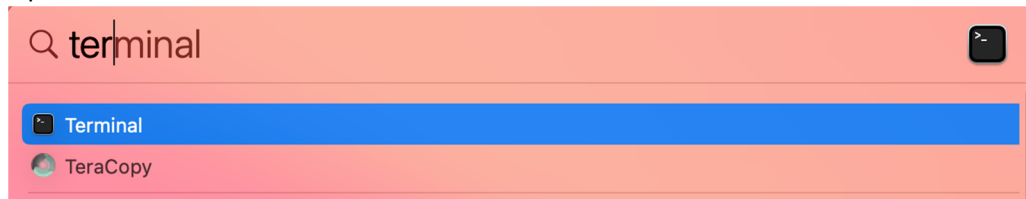
5. Select the **General** tab. If the **Anywhere** option is under **Allow apps downloaded from:** select it and go to step 10. If not, close the Security & Privacy window and continue with the next step.



6. Click the **Magnifying Glass** to open Spotlight Search.



7. Open **Terminal**.



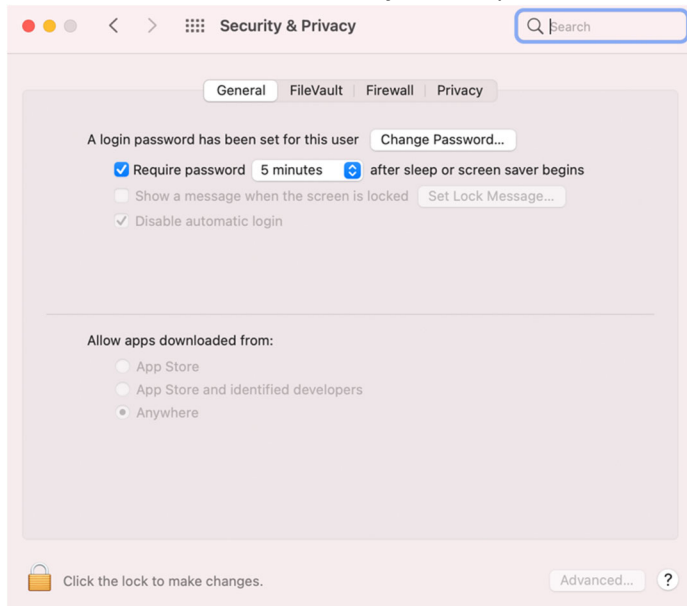
8. Type “**sudo spctl --master-disable**” without the quotes. Enter your Mac password. **It will not show what you type as you enter your password.**



```
ray -- bash -- 80x24
Last login: Mon Feb  8 11:13:16 on ttys000

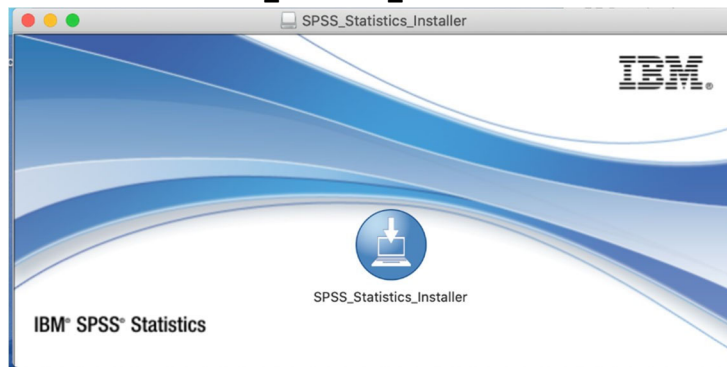
The default interactive shell is now zsh.
To update your account to use zsh, please run `chsh -s /bin/zsh`.
For more details, please visit https://support.apple.com/kb/HT208050.
Rays-iMac:~ ray$ sudo spctl --master-disable
Password:
Rays-iMac:~ ray$
```

9. Go back to **General tab**. The **Anywhere** option will be selected. You can now install SPSS.

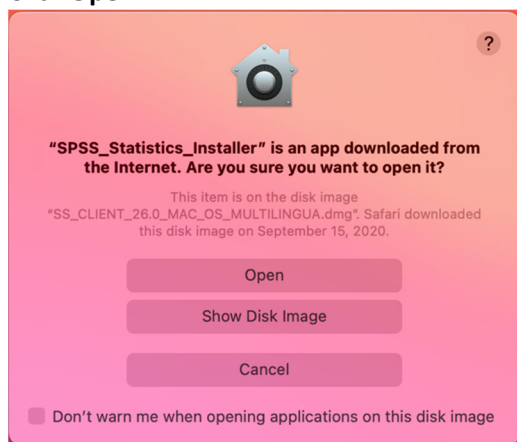


10. Once the files have been downloaded, navigate to the **Downloads** folder on your local hard drive. Find the **SS\_CLIENT\_26.0\_MAC\_OS\_MULTILINGUA.dmg** file and double-click on it to begin the installation.

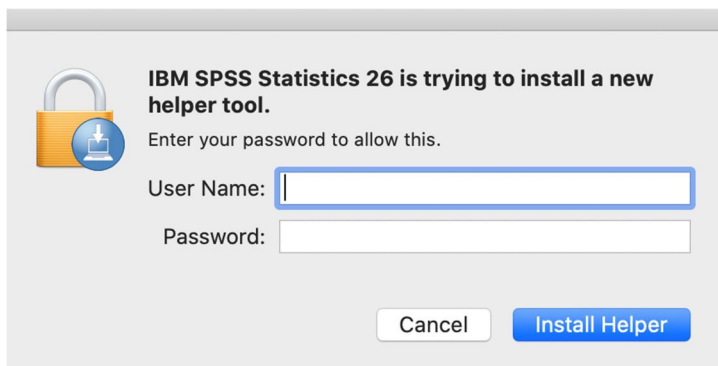
11. Double-click the **SPSS\_Statistics\_Installer**.



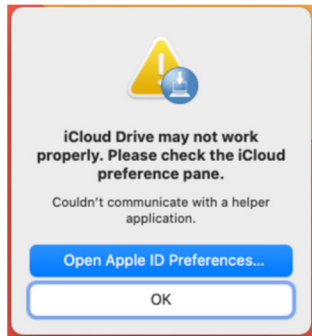
12. Click **Open**.



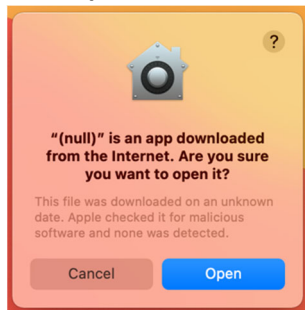
13. Enter your local username and password. This is the User Name and Password you use to log onto your computer and not your Lake Forest College username and password.



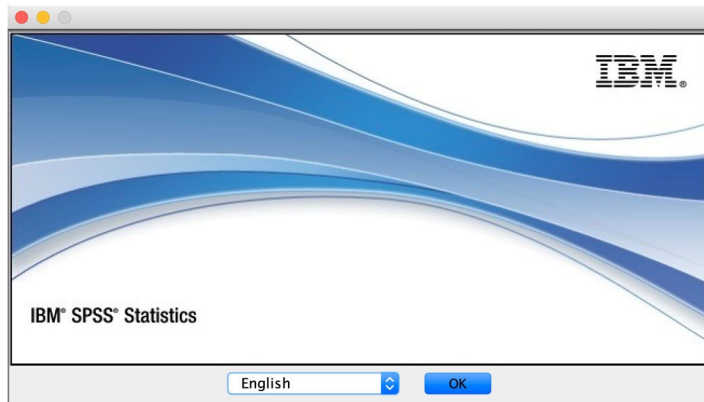
14. Click **OK**.



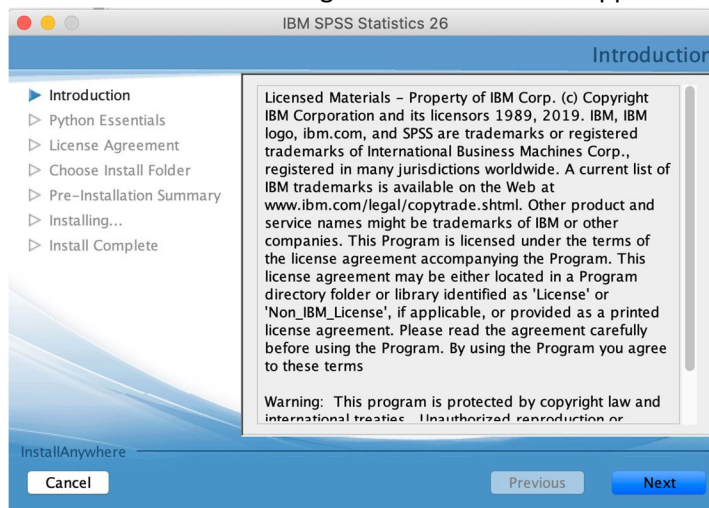
15. Click **Open**.



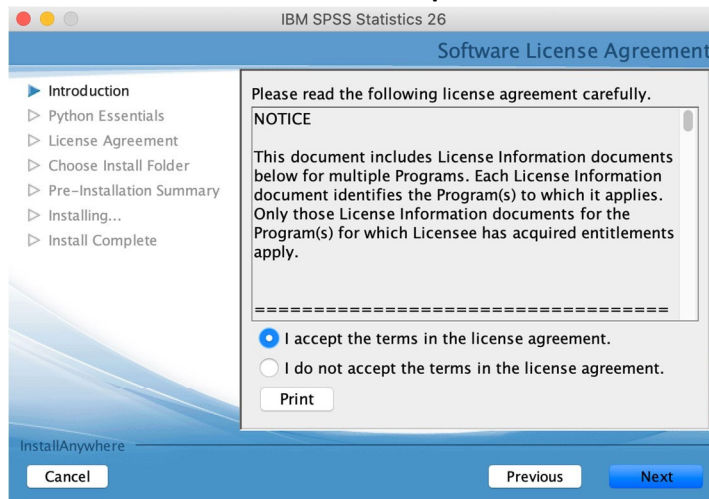
16. Click **OK** on this screen too.



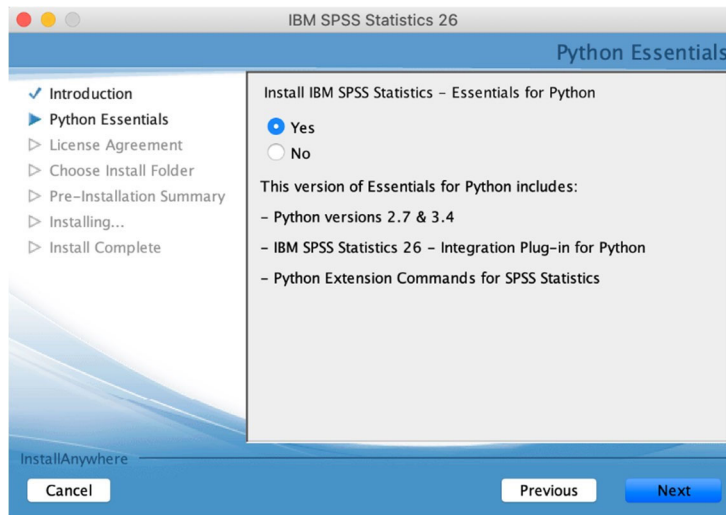
17. Click **Next** on the license agreement screen that appears.



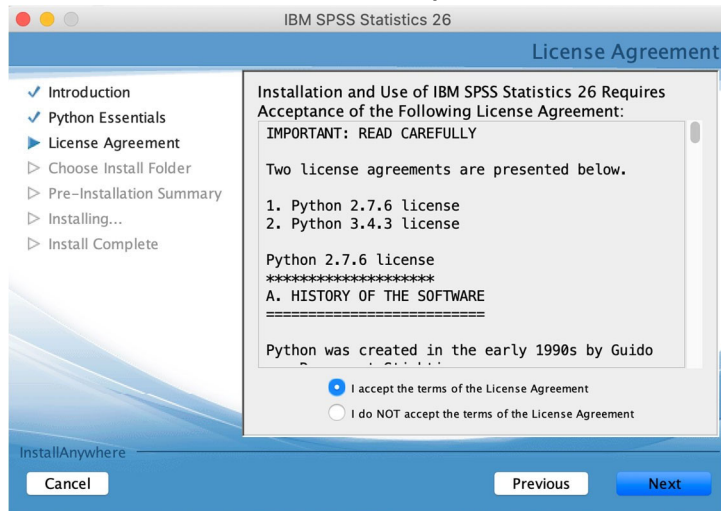
18. Click the radio button next to **I accept the terms in the license agreement**. Click **Next**.



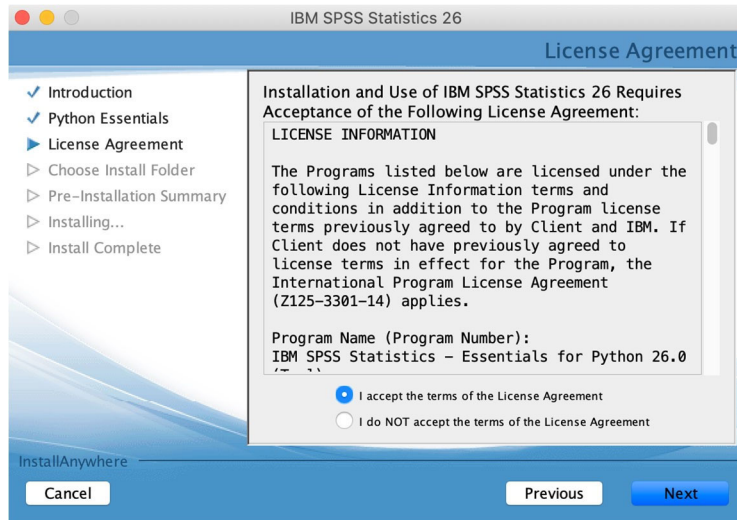
19. Click the radio button next to **Yes** under **Install IBM SPSS Statistics – Essentials for Python**, and then click **Next**.



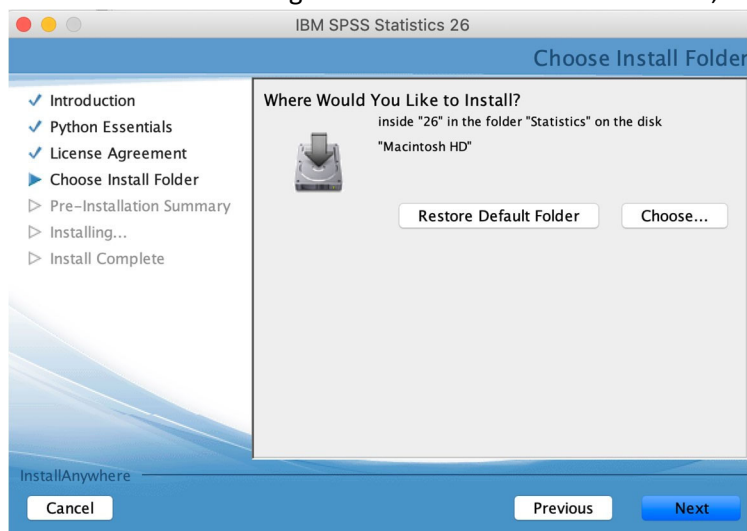
20. Click the radio button next to **I accept the terms in the License Agreement**. Click **Next**.



21. Click the radio button next to **I accept the terms of the License Agreement**, and then click **Next**.



22. Leave the default setting for **Choose Install Folder** selected, and click **Next**.

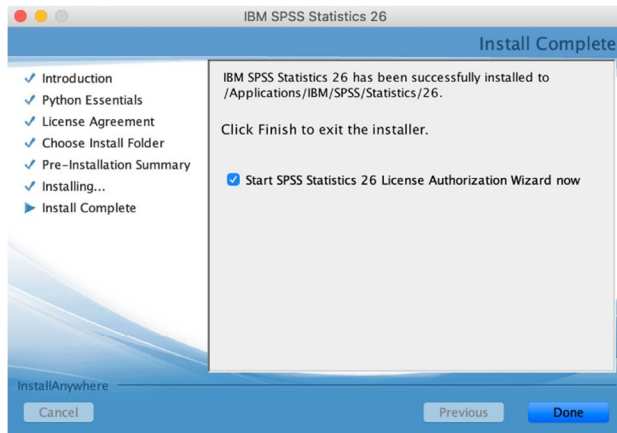




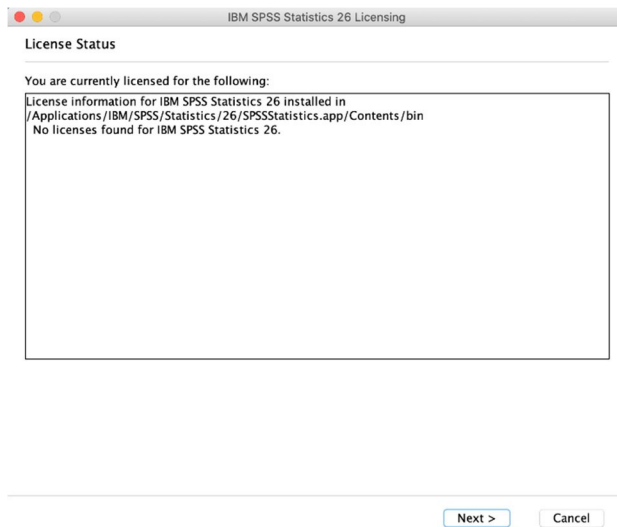
23. Click **Install**.



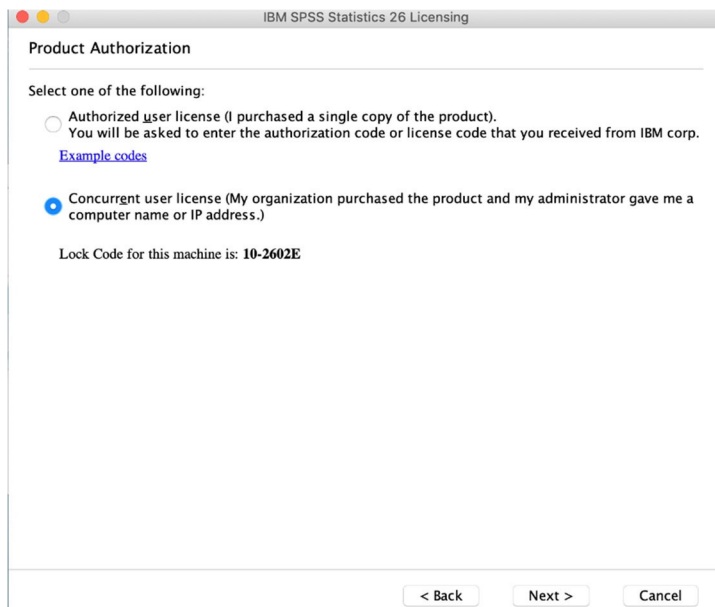
24. Click the checkbox next to **Start SPSS Statistics 26 License Authorization Wizard now**, and then click **Done**.



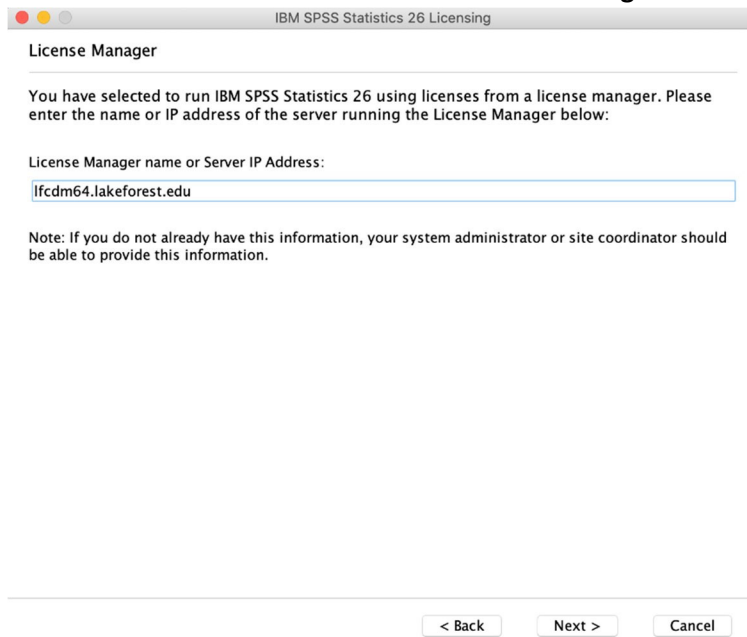
25. Click **Next** on the **License Status** screen.



26. Select **Concurrent user license**. Click **Next**.



27. Enter **lfcdm64.lakeforest.edu** for the **License Manager** name text box.



IBM SPSS Statistics 26 Licensing

**License Manager**

You have selected to run IBM SPSS Statistics 26 using licenses from a license manager. Please enter the name or IP address of the server running the License Manager below:

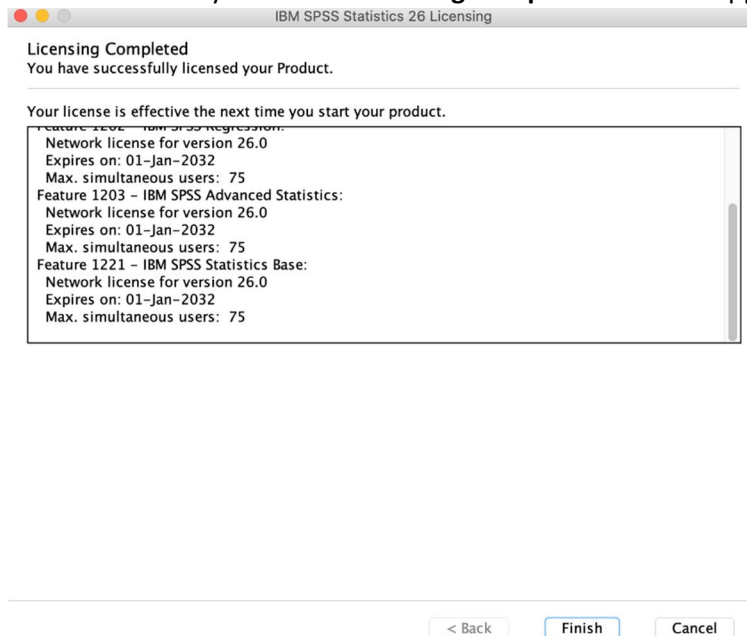
License Manager name or Server IP Address:

lfcdm64.lakeforest.edu

Note: If you do not already have this information, your system administrator or site coordinator should be able to provide this information.

< Back   Next >   Cancel

28. Click **Finish** after you see the **Licensing Completed** window appear.



IBM SPSS Statistics 26 Licensing

**Licensing Completed**

You have successfully licensed your Product.

Your license is effective the next time you start your product.

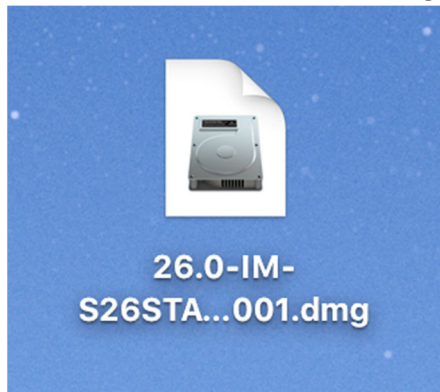
Feature 1203 - IBM SPSS Advanced Statistics:  
Network license for version 26.0  
Expires on: 01-Jan-2032  
Max. simultaneous users: 75  
Feature 1221 - IBM SPSS Statistics Base:  
Network license for version 26.0  
Expires on: 01-Jan-2032  
Max. simultaneous users: 75

< Back   Finish   Cancel

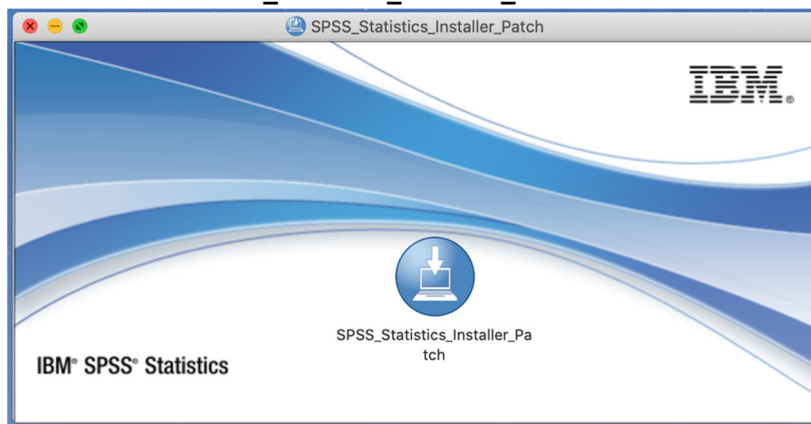
29. This icon will be on your desktop. You can put it in the trash. SPSS will be found in the **Applications** folder under **IBM**.



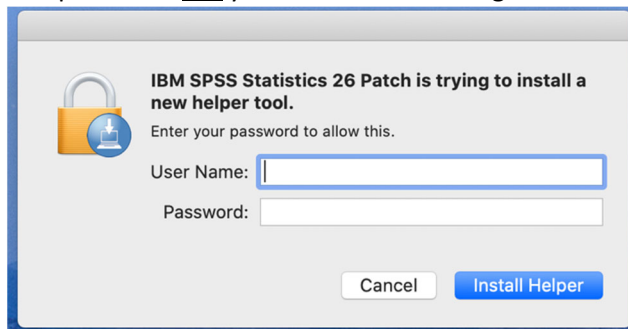
30. Once the SPSS installation is finished, navigate to the **Downloads** folder on your local hard drive. Find the **26.0-IM-S26STATC-Mac-FP001.dmg** file and double-click on it to begin the installation.



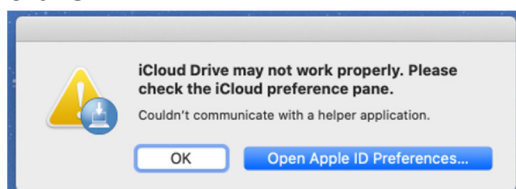
31. Double-click the **SPSS\_Statistics\_Installer\_Patch**.



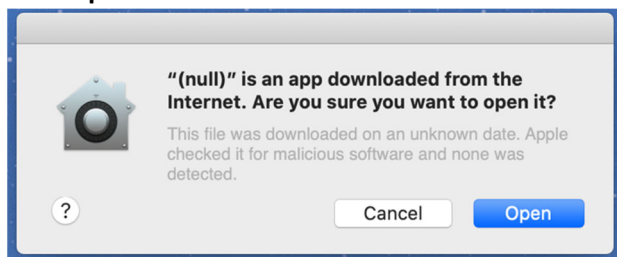
32. Enter your local username and password. This is the User Name and Password you use to log onto your computer and not your Lake Forest College username and password.



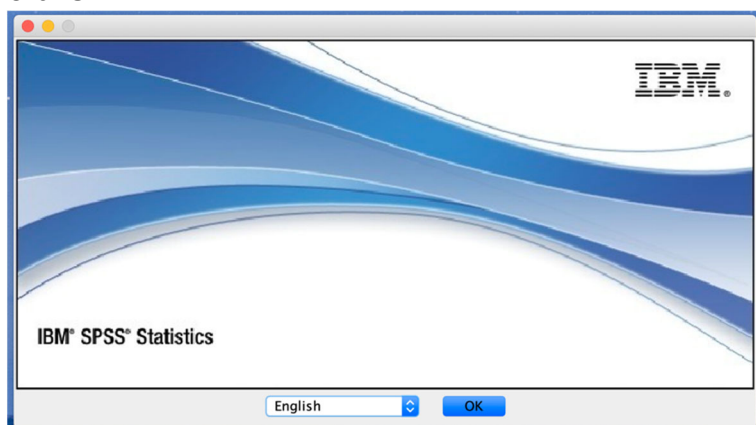
33. Click **OK**.



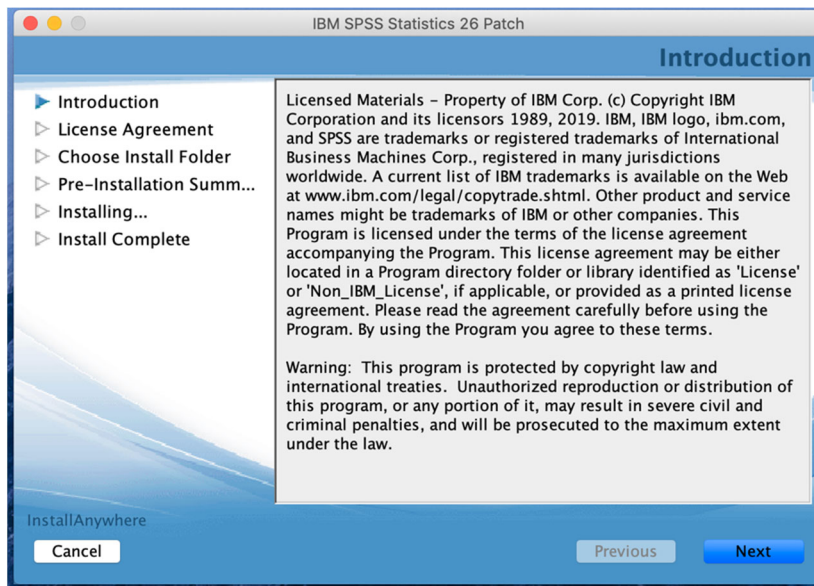
34. Click **Open**.



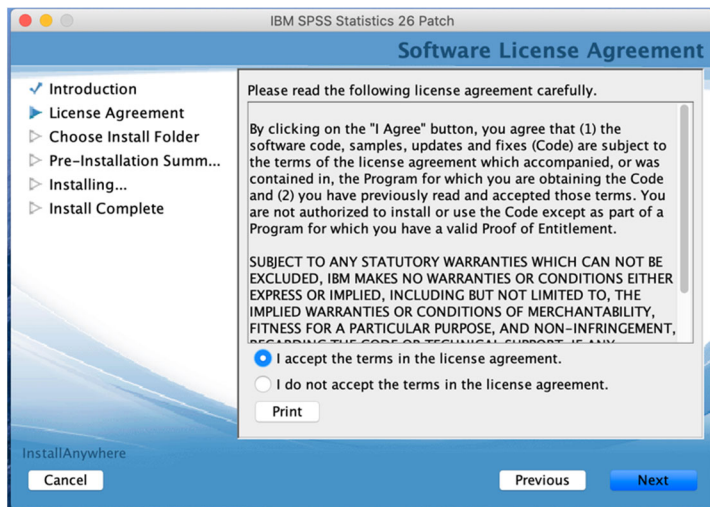
35. Click **OK**.



36. Click **Next**.



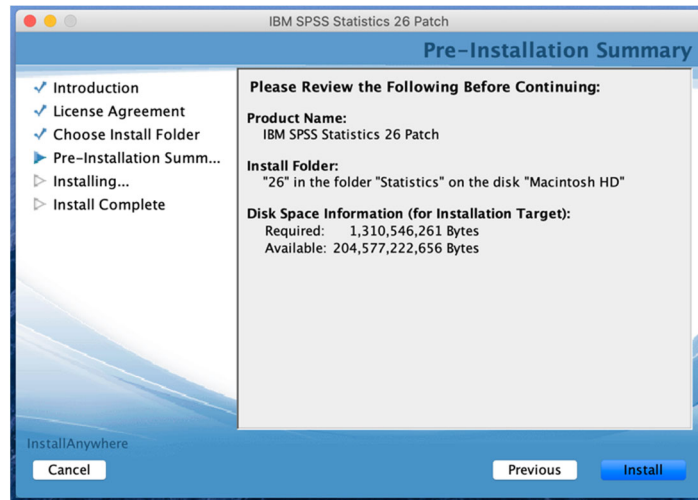
37. Click **Next**.



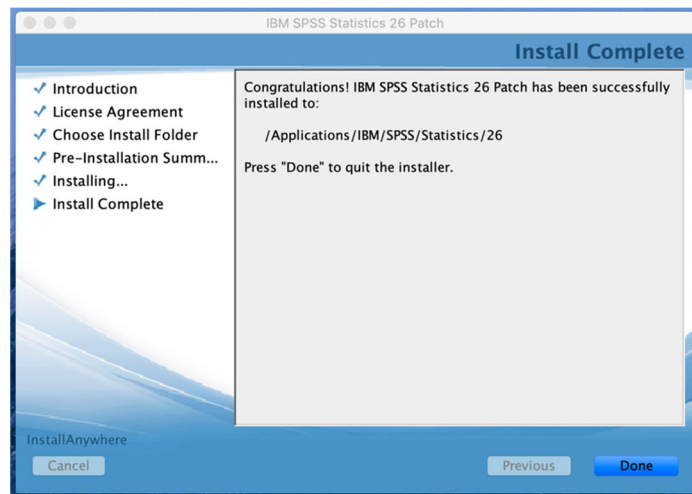
38. Click **Next**.



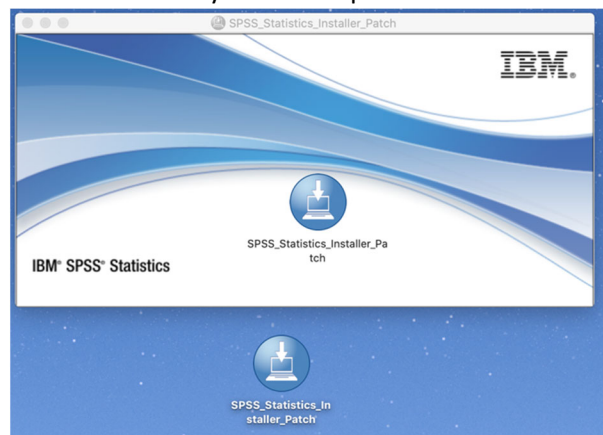
39. Click **Install**.



40. Click **Done**.



41. These will be on your desktop. Close the window and put the file in the trash.



42. When you run SPSS and try to open a folder for the first time, you will see this box. Select **OK**.

